

Julian Podmore's Workshop

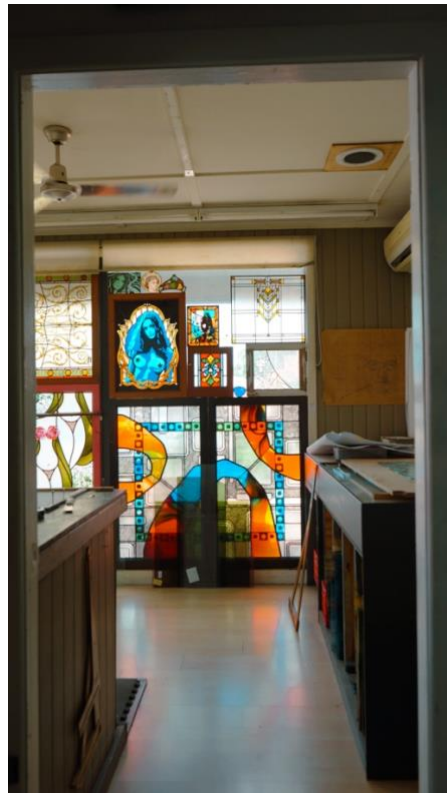
When I arrive at Julian Podmore's workshop, the bus driver will drop me off on an inclined driveway.



To enter the workshop, there is a small step.



Once inside Julian's workshop, there are lots of glass pieces, delicate objects, and tools. I won't touch anything to avoid breaking something or hurting myself.



If I need to use a bathroom, there is a small room just past the main workshop space. I can ask the tour guide to show me where to go. Please note, this bathroom is not wheelchair accessible.

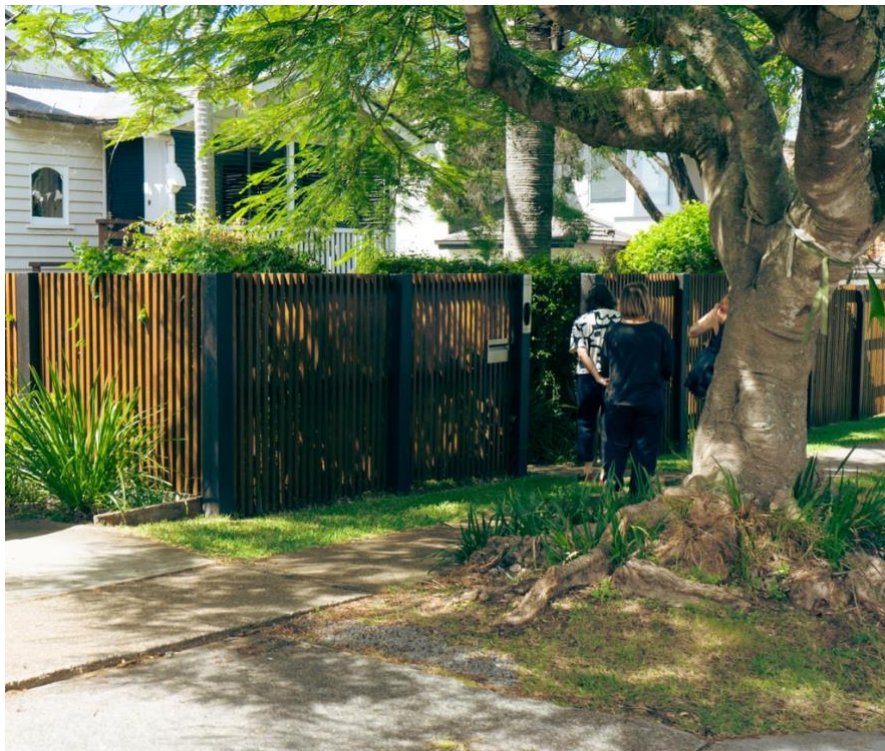


John Honeywill's Studio

When I arrive at John Honeywill's studio, the bus driver will drop me off on a neighbourhood street. There is a small step from the road onto the driveway and various concrete textures.



Next, I will enter through a wooden gate onto a small footpath. This footpath is lined with plants that may droop over the path.





I will cross some coarse garden gravel and a patch of grassy lawn.



I will pass through another wooden gate onto a series of large stepping stones, gravel and garden moss.





Once I pass the stepping stones, I will arrive at a second patch of grassy lawn and concrete pavers. There is a step between the concrete stones and the entrance to John's studio.





I have now arrived at John's studio. In John's studio, there may be a small brown dog named 'Abby' walking around.



To exit, I will go back the way I came.

Farmhouse Kedron

When I arrive at Farmhouse Kedron for lunch, the bus driver will drop me in a carpark. This venue is wheelchair accessible and has wheelchair bathroom facilities.



The toilet is located at the back of the venue. If I need assistance finding it, I can ask the tour guide.





Jan Murphy Gallery

When I arrive at Jan Murphy Gallery, the bus driver will drop me off on a street beside the gallery.



To enter the gallery, there is a small ramp with an incline. There is a large glass door which will stay open as I enter.



Inside the gallery, there is lots of room to move around. Please note, there is not a wheelchair accessible toilet at this venue.



To exit, I will leave the way I came.